



ENGINE

Model	: ISUZU-AQ-6HK1X
Type	: Water-cooled, 4 cycle, 6 cylinders, line type direct injection, turbocharger, intercooler, electronic diesel engine
Power	: 265 HP @1900 rpm / SAE J1349 (Net) : 281 HP @1900 rpm / SAE J1995 (Gross)
Max. Torque	: 1043 Nm @1500 rpm (Net) : 1080 Nm @1500 rpm (Gross)
Displacement	: 7790 cc
Bore and Stroke	: 115 mm x 125 mm
This new engine complies with the Emission Regulations U.S. EPA Tier IV Final and EU Stage IV	

UNDERCARRIAGE

X Type Lower Frame Construction Pentagon Box Type Chassis	
Shoe	: Triple grouser
No. Of Shoes	: 2 x 50
No. Of Lower Rollers	: 2 x 9
No. Of Upper Rollers	: 2 x 2
Track Tensioning	: Hydraulic Spring Tensioning

CAB

- Wide cab and easy entrance
- Use of six viscomount cabin mountings that dampen the vibrations
- Cooled storage room
- Colourful, Easy to read TFT indicant monitor
- Glass holder, book and object storage pockets
- Full automatic digitally air-conditioner
- Overclass standarts on the visibility
- Pool type floor mat
- Improved operator's comfort through versatile adjustable seat
- Ergonomically redesigned cabin through relocated switch board, and re-styled travel pedals and levers
- USB connected MP3 player
- Easy to open the front sliding glass
- Front and rear sun visor
- Large storage areas
- Height adjustable joystick
- Improved seat to back angle
- The height adjustable seat armrests
- Opera Control System

TRAVEL AND BRAKERS

Travel	: Fully hydrostatic
Travel Motors	: Axial piston type
Reduction	: 2 stage planetary gear
Travel Speed	
High Speed	: 5,0 km/h
Low Speed	: 3,0 km/h
Max. Drawbar Pull	: 30.540 kgf
Gradeability	: 35° (%70)
Parking Brake	: Hydraulic multi disc type
Ground pressure	: 0,72 kgf/cm ²

HYDRAULIC SYSTEM

Main Pump	
Type	: Double variable displacement axial piston pumps
Max. Flow	: 2 x 300 L/min
Pilot Pump	: Gear, 28 L/min
Relief Valves	
Attachment	: 350 kgf/cm ²
Power Boost	: 380 kgf/cm ²
Travel	: 350 kgf/cm ²
Swing	: 285 kgf/cm ²
Pilot	: 40 kgf/cm ²
Cylinders	
Main Boom	: 2 x ø 145 x ø 100 x 1.510 mm
Stick Cylinder	: 1 x ø 170 x ø 120 x 1.735 mm
Bucket Cylinder	: 1 x ø 145 x ø 105 x 1.280 mm

OPERA CONTROL SYSTEM

- | | |
|---|---|
| • Easy-to-use control panel and menus | • Improved fuel economy and productivity |
| • Overheat prevention and protection system without interrupting the work | • Automatic idling Selection of multi-language on control panel |
| • Automatical electric power-off | • Rear-view, arm-view camera (Optional) |
| • Maximum efficiency by selection of power and work modes | • Possibility to register 26 different operating hours |
| • Error mode registry and warning system | • Anti-theft system with personal code |
| • Hidromek Smartlink | • Real time monitoring of operational parameters such as pressure, temperature, engine load |
| • Automatic preheating | |
| • Automatical powerboost (Optional) | |

SWING SYSTEM

Swing Motor	: Axial piston type integrated with shock absorber valves
Reduction	: 2 stage planetary gear box.
Swing Brakes	: Hydraulic multi disc type, automatic warnings
Swing Speed	: 9,6 rpm

CAPACITY

Fuel Tank	: 570 L	Engine Oil	: 36 L
Hydraulic Tank	: 385 L	Swing Reduction	: 7 L
Hydraulic System	: 475 L	Travel Reduction	: 2x10 L
Radiator	: 39 L		

ELECTRICAL SYSTEM

Voltage	: 24 V
Battery	: 2 x 12 V x 150 Ah
Alternator	: 24 V / 50 A
Starting Motor	: 24 V / 5,0 kw

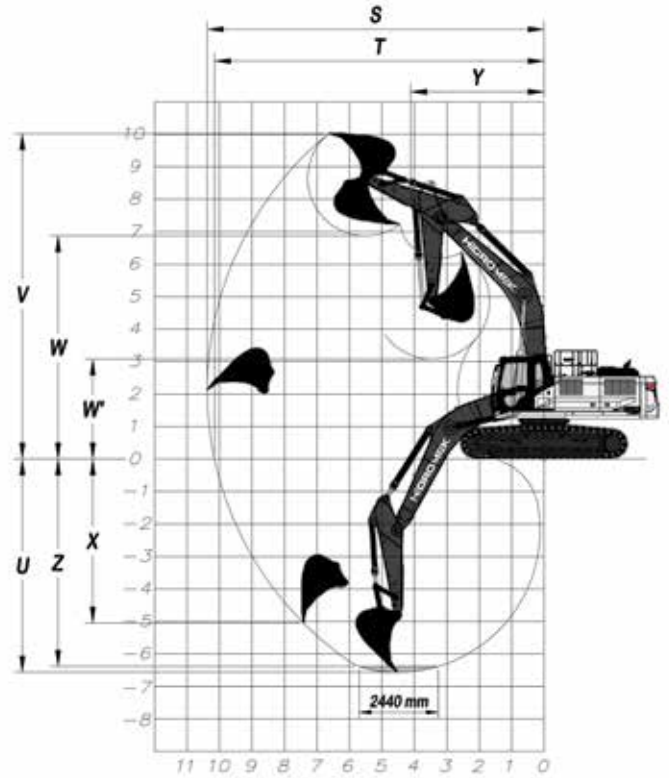
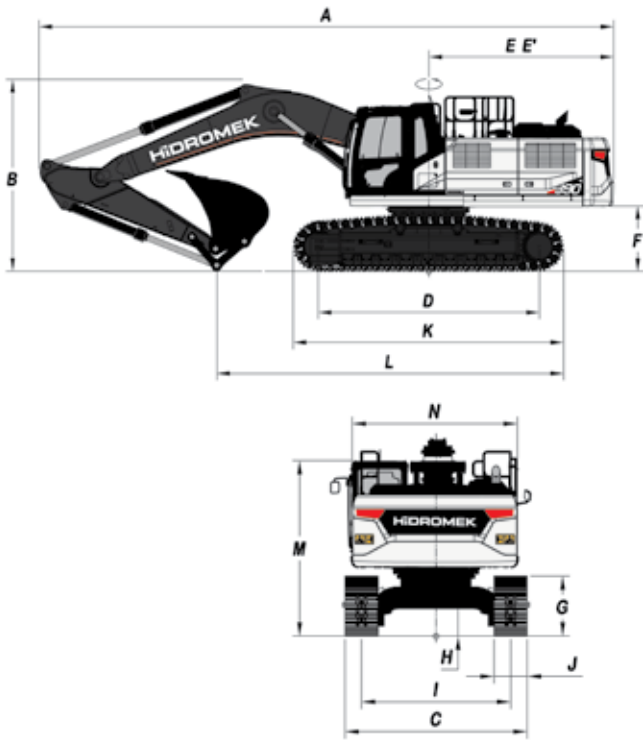
LUBRICATION

Centralized lubrication system is provided for lubrication all difficult-to-reach parts on the components, such as boom and arm

OPERATING WEIGHT

Standard machine operating weight : 40.050 kg
Operational weight, complying with the ISO 6016 standards, includes full fuel tank, hydraulic system and other liquids, 75 kg operator weight and standard equipped machine weight. Optional equipments are not included.

HMK390 NLC



GENERAL DIMENSIONS

Boom Dimension	*6100 mm		6500 mm		
Arm Dimension	*2200 mm	2600 mm	2600 mm	3200 mm	4000 mm
A - Overall Length	11030 mm	10990 mm	11390 mm	11330 mm	11350 mm
B - Overall Height	3760 mm	3640 mm	3640 mm	3500 mm	3680 mm
C - Overall Width (To Top Of Boom) - LC	*3300 / 3400 / 3500 / 3600 mm				
C - Overall Width (To Top Of Boom) - NLC	*2990 / 3090 / 3190 / 3290 mm				
D - Idler Distance (Of Lower Structure)	4240 mm				
E - Tail Swing Radius	3520 mm				
E' - Tail Swing Distance	3540 mm				
F - Upperstructure Ground Clearance	1250 mm				
G - Crawler Height	1090 mm				
H - Min. Ground Clearance	510 mm				
I - Track Gauge	2700 mm				
J - Shoe Width	*600 / 700 / 800 / 900 mm				
K - Overall Length Of Crawler	5190 mm				
L - Length Over Ground	7460 mm	6670 mm	7140 mm	6200 mm	5550 mm
M - Overall Height (To Top Of Cab)	3190 mm				
N - Upperstructure Width	2990 mm				

* Standard

WORKING DIMENSIONS

Boom Dimension	*6100 mm		6500 mm		
Arm Dimension	*2200 mm	2600 mm	2600 mm	3200 mm	4000 mm
S - Max. Digging Reach	11040 mm	10380 mm	10800 mm	11350 mm	12070 mm
T - Max. Digging Reach At Ground Level	9810 mm	10150 mm	10580 mm	11050 mm	11880 mm
U - Max. Digging Depth	6160 mm	6560 mm	6970 mm	7570 mm	8370 mm
V - Max. Digging Height	9950 mm	10020 mm	10270 mm	10550 mm	10820 mm
W - Max. Dumping Height	6750 mm	6870 mm	7130 mm	7400 mm	7690 mm
W' - Min. Dumping Height	3570 mm	3070 mm	3330 mm	2740 mm	1950 mm
X - Max. Vertical Digging Depth	4930 mm	5050 mm	5400 mm	6020 mm	6670 mm
Y - Min. Swing Radius	4330 mm	4110 mm	4450 mm	4450 mm	4610 mm
Z - Max. Digging Depth (2440 Mm Level)	5960 mm	6380 mm	6780 mm	7410 mm	8230 mm

* Standard

DIGGING PERFORMANCE

Standard Bucket Capacity (SAE)	2,0 m ³
Bucket Digging Force (Power Boost) ISO	25.200 kgf
Arm Breakout Force (power boost) ISO	21.600 kgf

HIDROMEK®

FACTORY - HEAD OFFICE

Ahi Evran OSB Mahallesi Osmanlı Caddesi No:1 06935 Sincan / ANKARA / TURKEY
 Tel: (+90) 312 267 12 60 Fax: (+90) 312 267 12 39
 www.hidromek.com

Notice:
 Hidromek has the right to modify the specifications and design of the model indicated on this brochure without prior notice.